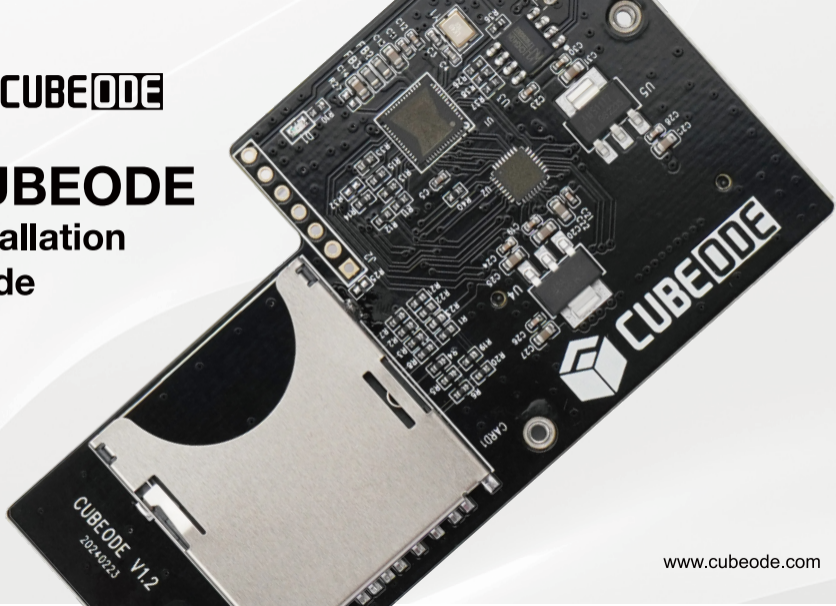


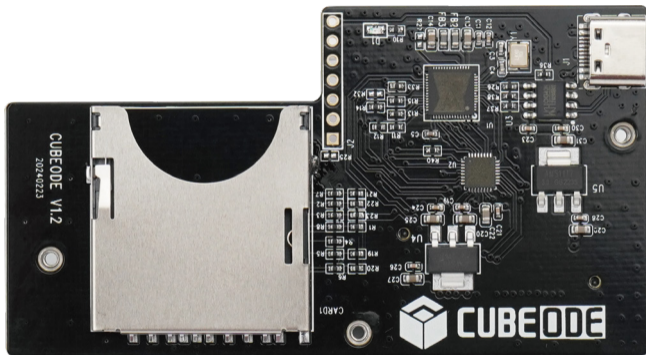


CUBEODE

Installation Guide

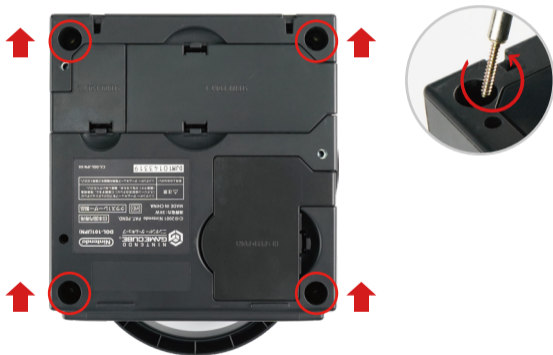


PACKAGE CONTAINS



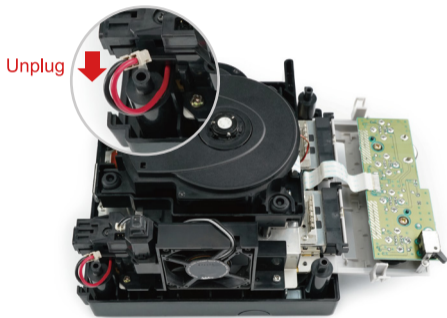
STEP 1:

Turn the Gamecube console over ,remove all four screws from the bottom of the console.

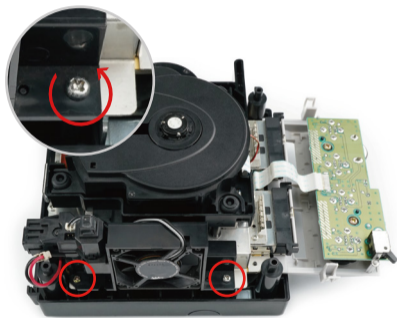


STEP2:

Unplug the power cord(2-1), remove the two screws on the fan(2-2).



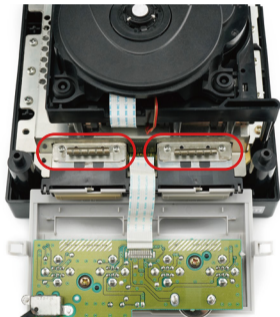
(2-1)



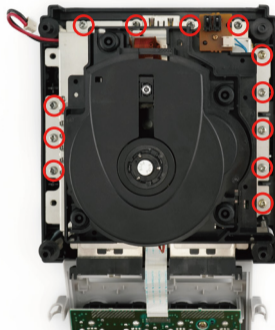
(2-2)

STEP3:

Remove the memory card slot screws(3-1), remove the 12 screws marked in the picture below(3-2).



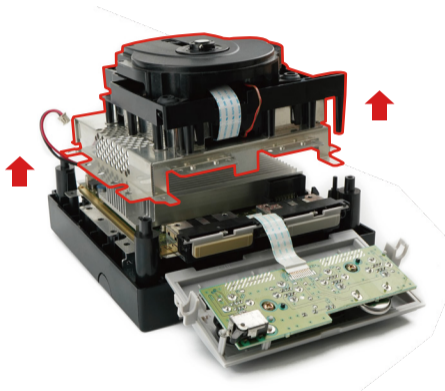
(3-1)



(3-2)

STEP4:

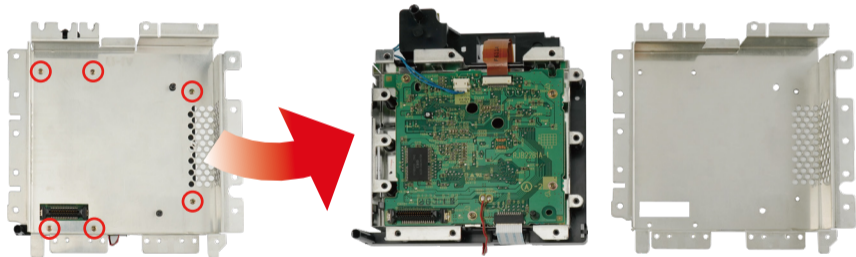
1.Remove the optical drive module assembly(4-1).



(4-1)

STEP4:

2.Flip and remove the screws on the bottom(4-2).

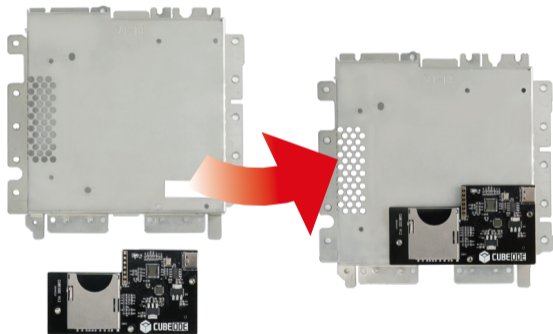


(4-2)

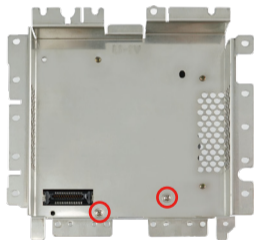
STEP5:

Place the cubeode in the position shown in the picture(5-1).

Secure the cubeode using the screws that came with the product package(5-2).

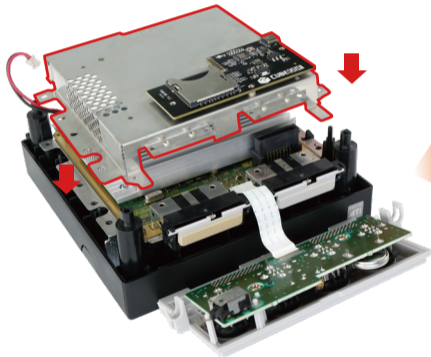


(5-1)

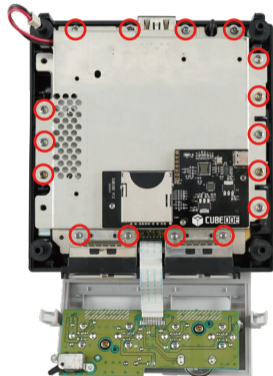


(5-2)

STEP6:

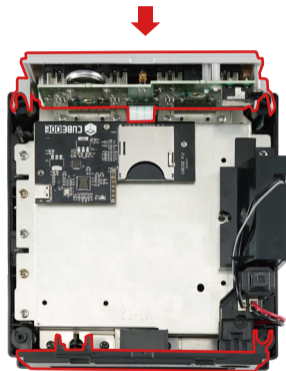
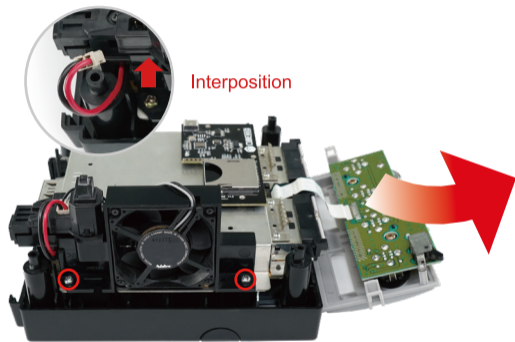


(6-1)



(6-2)

STEP6:



STEP 6:



(6-5)



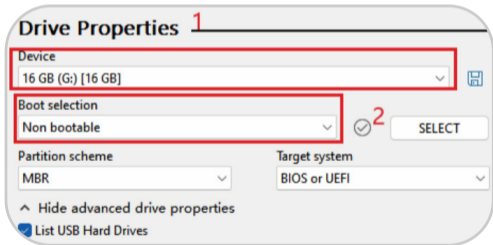
(6-6)

STEP7: GAME CARD SETUP TUTORIAL

1. Use the formatting tool rufus to format the SD card or TF card to the fat32 file system.

Tool Download Link: <https://rufus.ie/en/>

Select the **Device/Boot selection/File system**, click start to format your device.



STEP7: GAME CARD SETUP TUTORIAL

Format Options

Volume label
16 GB

3 File system: FAT32 (Default) Cluster size: 8192 bytes (Default)

^ Hide advanced format options

Quick format

4 Create extended label and icon files

Check device for bad blocks 1 pass

Status

READY

5

device found

STEP7: GAME CARD SETUP TUTORIAL

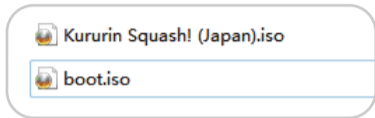
2. Download the latest version of Swiss homebrew software, unzip it and copy the boot.iso file from the gcloder folder to the root directory of the sd card.

Swiss Download Link: <https://github.com/emukidid/swiss-gc/releases>



STEP7: GAME CARD SETUP TUTORIAL

3.Put your favourite game files into the root directory of your SD card.



4.Insert the SD card into Cubeode, open the console and enjoy the game.

